



**How-to Guide
E-Commerce 5.0**

How To... Create Custom Application in E-Commerce 5.0

Version 1.00 – March 2007

**Applicable Releases:
SAP E-Commerce 5.0
SAP NetWeaver '04s**






Hari Ravu

<p>© Copyright 2005 SAP AG. All rights reserved.</p> <p>No part of this publication may be reproduced or transmitted in any form or for any purpose without the express permission of SAP AG. The information contained herein may be changed without prior notice.</p> <p>Some software products marketed by SAP AG and its distributors contain proprietary software components of other software vendors.</p> <p>Microsoft, Windows, Outlook, and PowerPoint are registered trademarks of Microsoft Corporation.</p> <p>IBM, DB2, DB2 Universal Database, OS/2, Parallel Sysplex, MVS/ESA, AIX, S/390, AS/400, OS/390, OS/400, iSeries, pSeries, xSeries, zSeries, z/OS, AFP, Intelligent Miner, WebSphere, Netfinity, Tivoli, and Informix are trademarks or registered trademarks of IBM Corporation in the United States and/or other countries.</p> <p>Oracle is a registered trademark of Oracle Corporation.</p> <p>UNIX, X/Open, OSF/1, and Motif are registered trademarks of the Open Group.</p> <p>Citrix, ICA, Program Neighborhood, MetaFrame, WinFrame, VideoFrame, and MultiWin are trademarks or registered trademarks of Citrix Systems, Inc.</p> <p>HTML, XML, XHTML and W3C are trademarks or registered trademarks of W3C[®], World Wide Web Consortium, Massachusetts Institute of Technology.</p> <p>Java is a registered trademark of Sun Microsystems, Inc.</p> <p>JavaScript is a registered trademark of Sun Microsystems, Inc., used under license for technology invented and implemented by Netscape.</p> <p>MaxDB is a trademark of MySQL AB, Sweden.</p> <p>SAP, R/3, mySAP, mySAP.com, xApps, xApp, and other SAP products and services mentioned herein as well as their respective logos are trademarks or registered trademarks of SAP AG in Germany and in several other countries all over the world. All other product and service names mentioned are the trademarks of their respective companies. Data</p>	<p>contained in this document serves informational purposes only. National product specifications may vary.</p> <p>These materials are subject to change without notice. These materials are provided by SAP AG and its affiliated companies ("SAP Group") for informational purposes only, without representation or warranty of any kind, and SAP Group shall not be liable for errors or omissions with respect to the materials. The only warranties for SAP Group products and services are those that are set forth in the express warranty statements accompanying such products and services, if any. Nothing herein should be construed as constituting an additional warranty.</p> <p>These materials are provided "as is" without a warranty of any kind, either express or implied, including but not limited to, the implied warranties of merchantability, fitness for a particular purpose, or non-infringement. SAP shall not be liable for damages of any kind including without limitation direct, special, indirect, or consequential damages that may result from the use of these materials.</p> <p>SAP does not warrant the accuracy or completeness of the information, text, graphics, links or other items contained within these materials. SAP has no control over the information that you may access through the use of hot links contained in these materials and does not endorse your use of third party web pages nor provide any warranty whatsoever relating to third party web pages.</p> <p>SAP NetWeaver "How-to" Guides are intended to simplify the product implementation. While specific product features and procedures typically are explained in a practical business context, it is not implied that those features and procedures are the only approach in solving a specific business problem using SAP NetWeaver. Should you wish to receive additional information, clarification or support, please refer to SAP Consulting.</p> <p>Any software coding and/or code lines /strings ("Code") included in this documentation are only examples and are not intended to be used in a productive system environment. The Code is only intended better explain and visualize the syntax and phrasing rules of certain coding. SAP does not warrant the correctness and completeness of the Code given herein, and SAP shall not be liable for errors or damages caused by the usage of the Code, except if such damages were caused by SAP intentionally or grossly negligent.</p>
--	--

Table of Contents

1. Business Scenario	5
2. Introduction	5
2.1 Topics Covered.....	5
2.2 Pre-requisites.....	5
3. Process Steps	6
3.1 Create Track	6
3.2 Configure NWDS..	8
3.3 Create Custom Application	9
3.3.1 Import Development Configuration from NWDI Server	9
3.3.2 Create Custom B2B Application.....	12
3.3.3 Copy initial set of files from Standard Application to Custom Application.....	16
3.3.4 Adjust Context Root for New Application.	19
3.3.5 Add a used relationship between the New DC and the Web DC.....	21
3.3.6 Create project for Custom Java files.	23
3.3.7 Create project for Web Module files.	24
3.3.8 Add used relationship between Web/b2b and Shr/ext DCs.	24
3.3.9 Build and Deploy Custom Application to Local Machine.....	27
3.3.10 Activate and Auto-Deploy to Development Server.....	30
3.4 Modify Custom Application	31
3.5 Deploy to Development Server.....	32
3.6 Complete Developer Tasks	32
4 Appendix.....	33
4.1 Common Issues During Project Setup and Usage.	33
4.2 NWDI Notes and Blogs.....	34

Icons

Icon	Meaning
	Caution
	Example
	Note
	Recommendation
	Syntax

Typographic Conventions

Type Style	Description
<i>Example text</i>	Words or characters that appear on the screen. These include field names, screen titles, pushbuttons as well as menu names, paths and options. Cross-references to other documentation.
Example text	Emphasized words or phrases in body text, titles of graphics and tables.
EXAMPLE TEXT	Names of elements in the system. These include report names, program names, transaction codes, table names, and individual key words of a programming language, when surrounded by body text, for example, SELECT and INCLUDE.
Example text	Screen output. This includes file and directory names and their paths, messages, source code, names of variables and parameters as well as names of installation, upgrade and database tools.
EXAMPLE TEXT	Keys on the keyboard, for example, function keys (such as F2) or the ENTER key.
Example text	Exact user entry. These are words or characters that you enter in the system exactly as they appear in the documentation.
<Example text>	Variable user entry. Pointed brackets indicate that you replace these words and characters with appropriate entries.

1. Business Scenario

A general requirement in E-Commerce 5.0 application development is to set up a custom application so that the original application is intact. This approach enables, to make comparison between standard application and custom application. This also helps to identify and isolate issues as being standard behavior or due to customizations, if and when they arise.

2. Introduction

This step-by-step guide will show how to create such a custom application using E-Commerce 5.0 B2B as an example. This guide is just complementary to E-Commerce 5.0 Development and Extension Guide.

2.1 Topics Covered

- Create Track
 - Create NWDI Track and Development Configurations with required software components for E-Commerce 5.0 development.
- Configure NWDS
 - Configure NWDS to use the Track/Development Configuration.
 - Configure NWDS to use local J2EE.
- Create Custom Application
 - Create, deploy and test Custom Application (b2b as example).
- Modify Custom Application
 - Make minor modifications to the custom application.
 - Build and deploy on the local machine and verify custom application to see modifications.
- Deploy to Development Server
 - Check-in and activate changes to custom application.
 - Auto-deploy to development server and verify custom application to see modifications.
- Complete Development Tasks
 - Release activities to consolidation system.

2.2 Pre-requisites

- NWDI setup is complete and functioning properly.
- NetWeaver Developer Workplace (NWDS + Local J2EE) is installed on a workstation.
- A user with same user id and password is created on both SLD and NWDI (if SLD and NWDI are on different servers).

2.3 Read This

The guide lists some issues that may be encountered during the setup and usage of this application. Please verify if they are applicable to your situation.

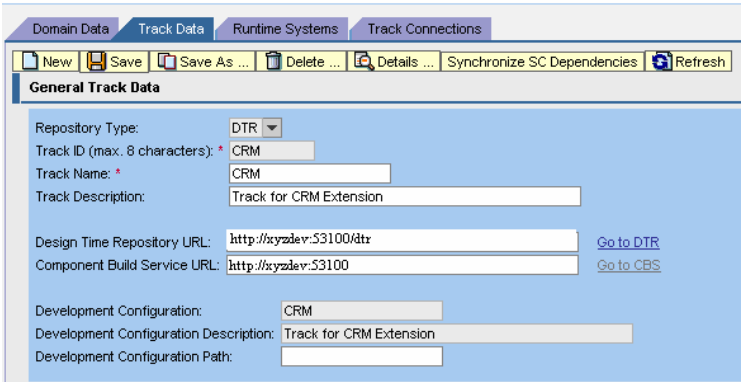
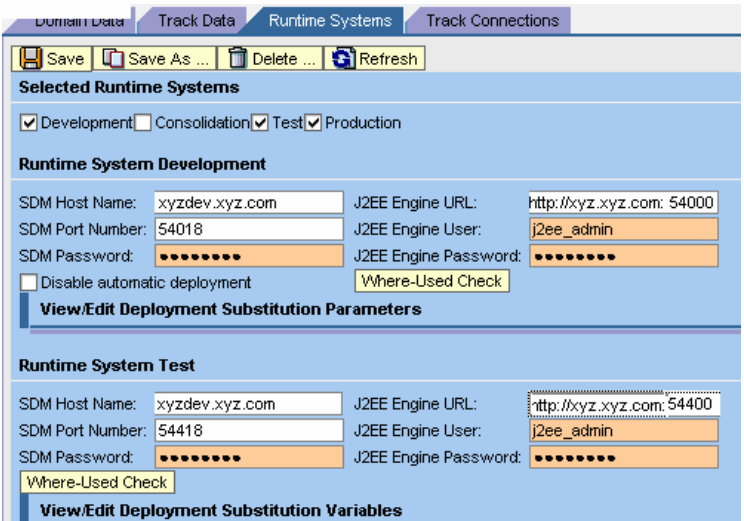
3. Process Steps

- Create Track
- Configure NWDS
- Create Custom Application
- Modify Custom Application
- Deploy to Development Server
- Complete Development Tasks



Estimated time to complete steps 3.2 through 3.6 is 2 hours (excluding the step 3.1 create track)

3.1 Create Track – (Basis Step)

<p>1. Create Track with development configurations for Development and Consolidation.</p>	
<p>2. Define runtime systems for Development and optionally Consolidation.</p>	
<p>3. Download all required Software Components (SC) for E-Commerce development. Get latest version for each SC, corresponds to version and SP level of CRM.</p>	<p>CUSTOMPRJ.sca SAP-SHRWEB.sca SAP-SHRAPP.sca SAP-CRMWEB.sca SAP-CRMAPP.sca SAP-SHRWEB.sca</p>



Refer E-Commerce 5.0
Development & Extension Guide.

SAP-SHRAPP.sca

SAP-CRMDIC.sca

sap.com~STRUTS.sca

sap.com~SAP-IPCMSA.sca

sap.com~SAP-CRMJAV.sca

sap.com~SAP-SHRJAV.sca

TEALEAF.sca

4. Add all these SCs to the Track.

Set SHRAPP and CRMAPP to “exclude from deployment”.



This ensures the standard applications b2b, b2c etc., which are part of SHRAPP are not deployed (over-written) when custom application is built and deployed. Standard applications are already deployed as part of installation process.

Software Components (SC)

Software Components for Development

Add SC ... Delete Table Entry Select All Exclude All Include All View/Edit XML Content ... Load SC Configuration ...

Software Component Name	Vendor	Release	Package Type	SC State	Exclude from Deployment
CUSTOMPRJ	sap.com	5.0	Source and Archive		<input type="checkbox"/>
SAP-CRMAPP	sap.com	5.0	Source		<input checked="" type="checkbox"/>
SAP-CRMDIC	sap.com	5.0	Source and Archive		<input type="checkbox"/>
SAP-CRMWEB	sap.com	5.0	Source and Archive		<input type="checkbox"/>
SAP-SHRAPP	sap.com	5.0	Source		<input checked="" type="checkbox"/>
SAP-SHRWEB	sap.com	5.0	Source and Archive		<input type="checkbox"/>

Row 1 of 6

Show: 1 additional rows

Required Software Components

Add SC ... Delete Table Entry Select All Exclude All Include All View/Edit XML Content ...

Software Component Name	Vendor	Release	SC State	Exclude from Deployment
SAP-CRMGSE	sap.com	1.0		<input type="checkbox"/>
SAP-CRMJAV	sap.com	5.0		<input type="checkbox"/>
SAP-IPCMSA	sap.com	5.0		<input type="checkbox"/>
SAP-JEE	sap.com	7.00		<input type="checkbox"/>
SAP-SHRJAV	sap.com	5.0		<input type="checkbox"/>

Row 1 of 10

Show: 0 additional rows

5. Check-in all components for the Track.

Check-In Development Consolidation Assembly Test Approval Production System State						
Track "CRM" - Check-In Components						
Check-In Configure Check-In... Select All Refresh						
File Name	Component	Release	SP Number	PatchName	Version	
SAPCRMAPP05P_9-20001153.SCA	sap.com_SAP-CRMAPP	5.0	5	CRM50PAT.09211256	MAIN_CRM50PAT_C	
SAPCRMDIC05_0-10002941.SCA	sap.com_SAP-CRMDIC	5.0	5	CRM50VAL.05231649	MAIN_CRM50VAL_C	
SAPCRMJAV05P_9-20001152.SCA	sap.com_SAP-CRMJAV	5.0	5	CRM50PAT.09211305	MAIN_CRM50PAT_C	
SAPCRMWEB05P_9-20001150.SCA	sap.com_SAP-CRMWEB	5.0	5	CRM50PAT.09211324	MAIN_CRM50PAT_C	
SAPIPCMSA05_0-20001202.SCA	sap.com_SAP-IPCMSA	5.0	5	CRM50VAL.05231649	MAIN_CRM50VAL_C	
SAPJEE09P_1-10003469.SCA	sap.com_SAP-JEE	7.00	9	NM04S_09_REL.061010	SAP AG 200610101	
SAPSHRAPPO5P_9-20001151.SCA	sap.com_SAP-SHRAPP	5.0	5	CRM50PAT.09211330	MAIN_CRM50PAT_C	
SAPSHRJAV05P_9-10002938.SCA	sap.com_SAP-SHRJAV	5.0	5	CRM50PAT.09211332	MAIN_CRM50PAT_C	
SAPSHRWEB05P_9-10002937.SCA	sap.com_SAP-SHRWEB	5.0	5	CRM50PAT.09211335	MAIN_CRM50PAT_C	
SAPBUILDT09_0-10003479.SCA	sap.com_SAP_BUILD	7.00	9	bpscore645VRcurU2308	SAP AG 200608231	
SAPJTECHS09P_3-10003467.SCA	sap.com_SAP_JTECHS	7.00	9	NM04S_09_REL.061016	SAP AG 200610161	
STRUTS01_0-10003646.SCA	sap.com_STRUTS	100	1	NIGHTBUILD.20060120	NIGHTLYBUILD-dev.	
TEALEAF00_0-20001451.SCA	sap.com_TEALEAF	100	0	NIGHTBUILD.20050614	NIGHTLYBUILD-dev.	

6. Import all components to Development.



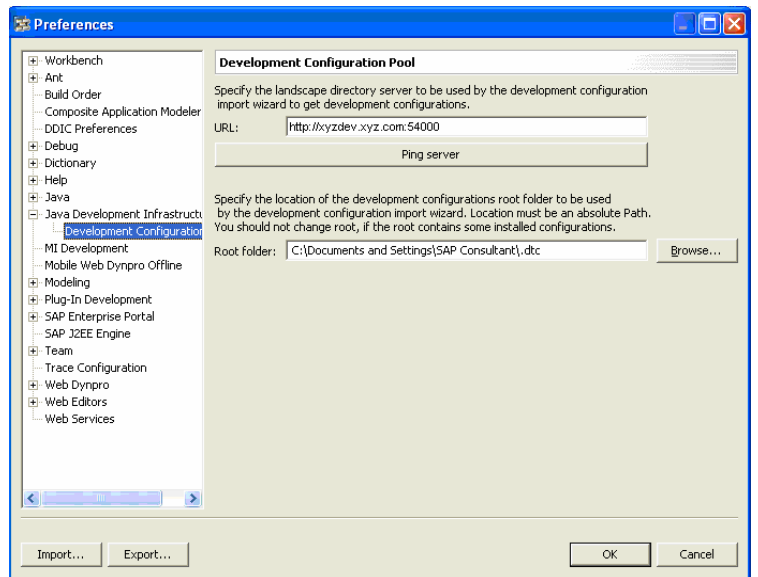
Import process takes eight or more hours to complete. It has been observed that importing one component at a time ensures the process is complete. Selecting all SCs at once takes quite longer and process may be aborted.

Check-In Development Consolidation Assembly Test Approval Production System State				
Track "CRM" - Import Queue for Development System UNLOCKED (Failed: 0 Running: 0 Waiting: 0)				
Import-Check Import Details... Select All Refresh History				
Processed at (GMT)	Component	Label	Owner	State Import-Check

3.2 Configure NWDS. Use a workstation where NWDS is setup.

1. Configure SLD URL

- Start NWDS.
- Choose
Windows → preferences → Java
Development
Infrastructure → Development
Configuration
- URL: Enter URL:Port for SLD
server

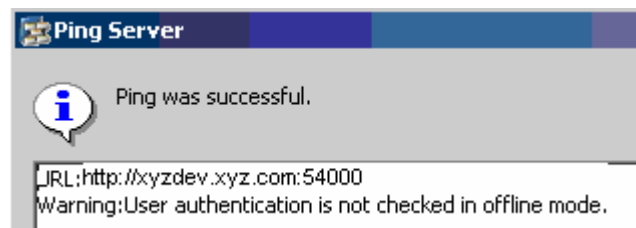


2. Verify SLD connection

- Choose Ping Server button.



As you are not logged in yet, you will see a warning: user authentication is not checked in offline mode.

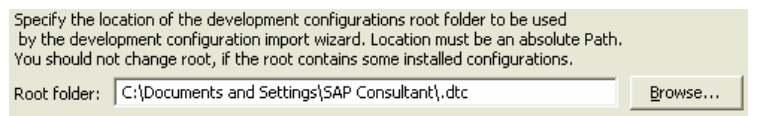


3. Specify local folder where Development Configuration is saved.

- Root Folder: Accept default (unless you want to specify some other folder).



This is the location where all files from server (DTR) are downloaded to. When you edit a file, you are modifying this local copy. And when you build and deploy for local testing, the files are read from this location.

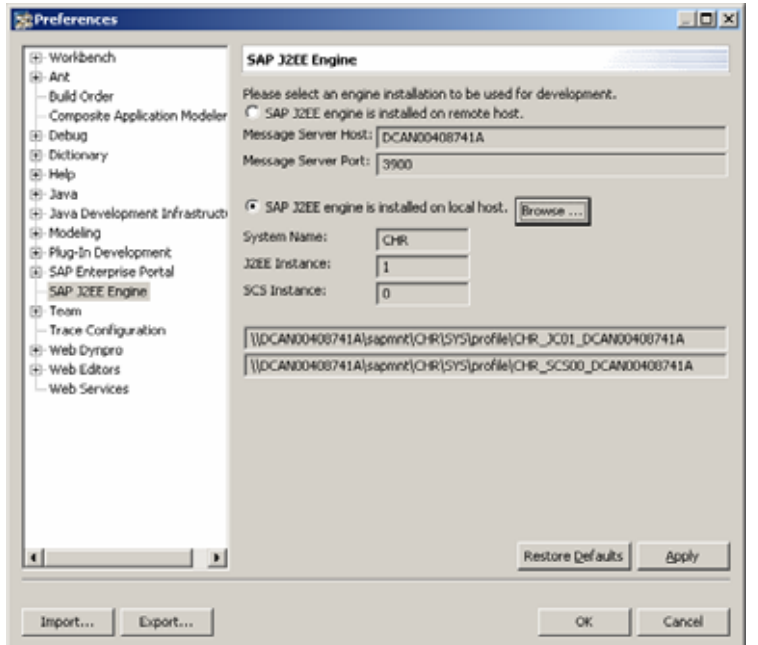


4. Configure J2EE engine URL and port (Local or some other remote server)

- Choose Windows→preferences→SAP J2EE Engine



This is where local build, deploy and testing happens.

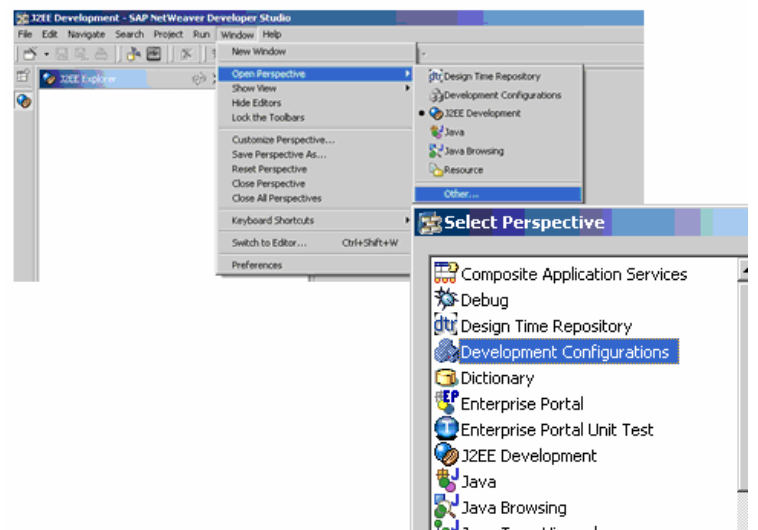


3.3 Create Custom Application


3.3.1 Import Development Configuration from NWDI Server

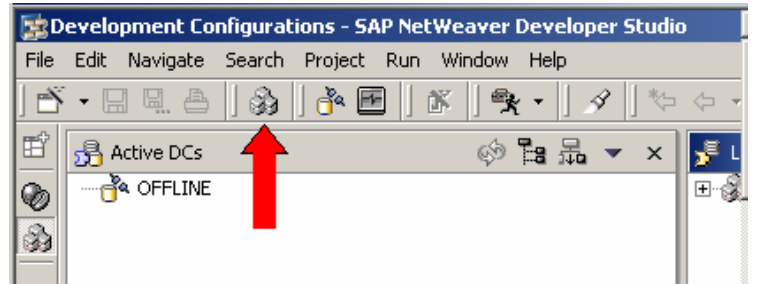
1. Open development configuration view.

- Choose Windows→ Open Perspective → Other → Development Configurations



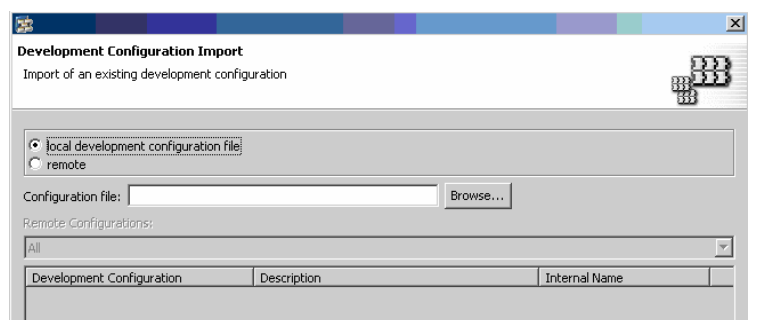
2. Start import development configuration wizard.

- Choose the icon 



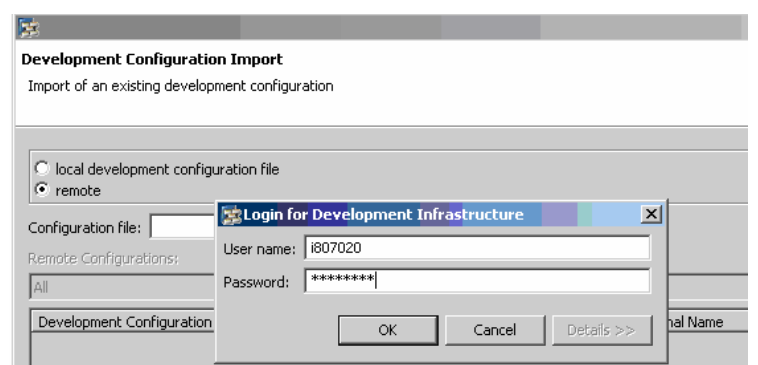
3. Read development configuration from remote system.

- Choose the radio button remote

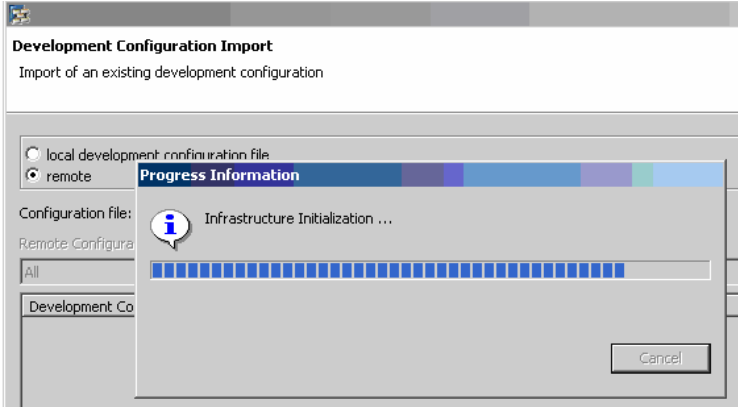
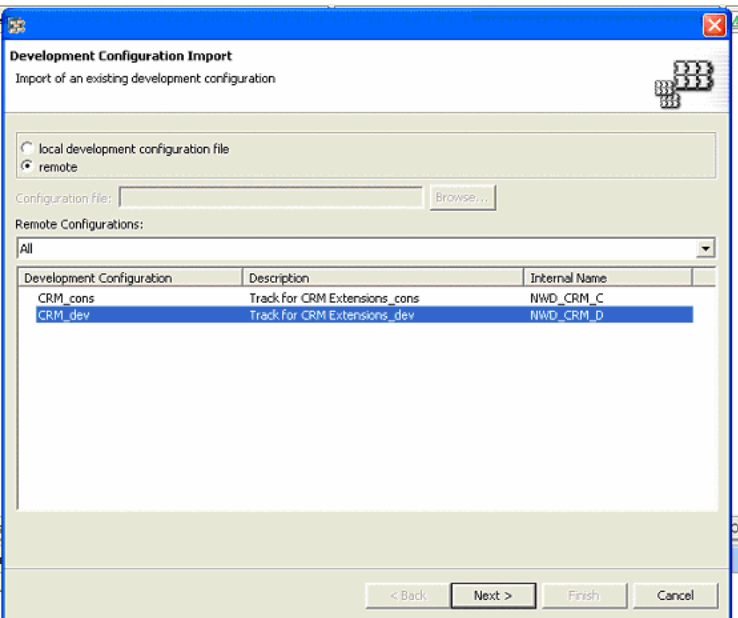
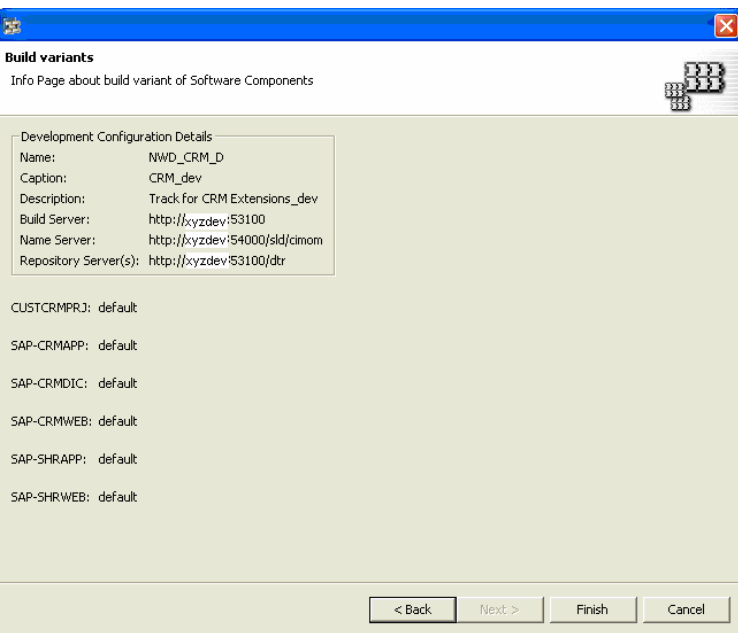


4. Login to server to read development configurations

- Enter userid/password for SLD server.
- Choose OK

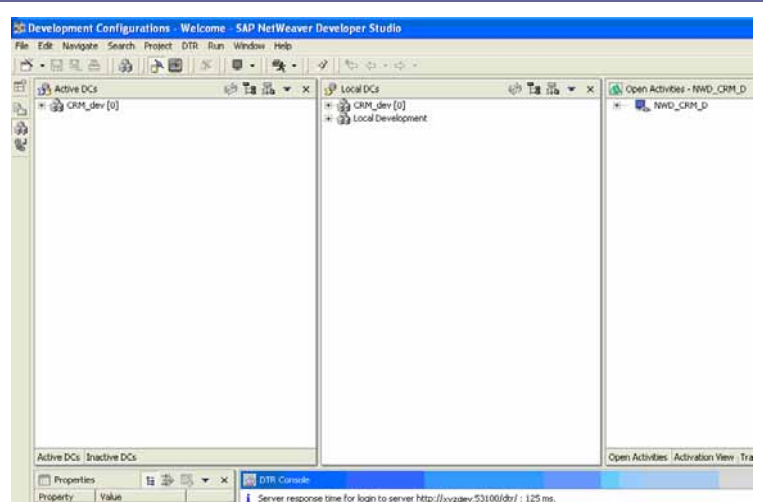


- Initialization begins.

	
<p>5. List of all development configurations are shown. You need to import development configuration for development system.</p> <ul style="list-style-type: none"> Choose “your development configuration for development system”. Example: CRM_dev Choose Next 	
<p>6. Confirmation screen with URLs for Build Server (CBS), Repository Server (DTR) and Name Server (SLD) is shown.</p> <ul style="list-style-type: none"> Verify details and Choose Finish. 	

7. Process completes and development configuration is shown on the screen.

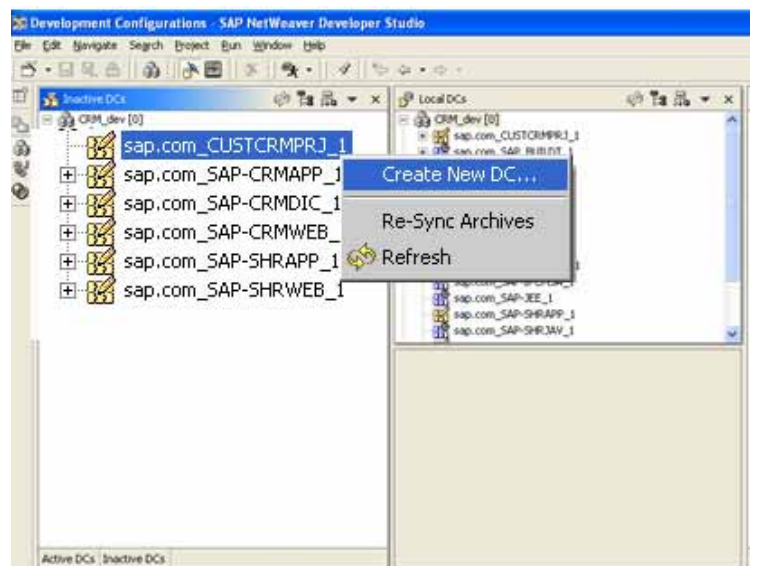
- Example CRM_dev[0]



3.3.2 Create Custom B2B Application

1. From development configuration view.

- Choose Inactive DCs tab (Lower Left)
- Expand [+] CRM_dev[0]
- Right click on sap.com_CUSTCRMPRJ_1 → Choose Create new DC



2. New Development Component Project screen is shown.

- *Enter* the following details:
- Name: home/ b2b_xyz
 - where xyz is customer's abbreviation
- Caption: XYZ B2B Application
- Domain: Customer Relationship Management
- Type: J2EE→Enterprise Application
- *Choose* Next



The name specified here is the application name. This is what you look for in Visual Admin or J2EE, when you need to start/stop application.

New Development Component project

Development Component
Create a new Development Component project

Vendor: sap.com

Name: home/ b2b_xyz

Caption: XYZ B2B Application

Language: American English

Domain: Customer Relationship Management

☐ Local Development Component

☒ Sync Used Archives

Type:

- sap.com
 - Composite Application Services
 - Content
 - Dictionary
 - Enterprise Portal
 - External Library
 - J2EE
 - Enterprise Application**
 - EJB Module
 - Web Module
 - J2EE Server Component
 - Java

< Back Next > Finish Cancel

3. DTR Activity Screen is shown.

- *Choose* New Activity..


New Development Component project

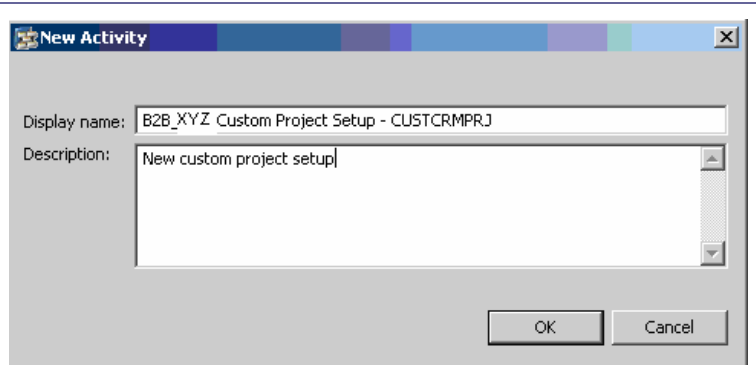
DTR Activity
Select a DTR Activity for the new Development Component

Available activities under workspace "inactive":

Description of activity:

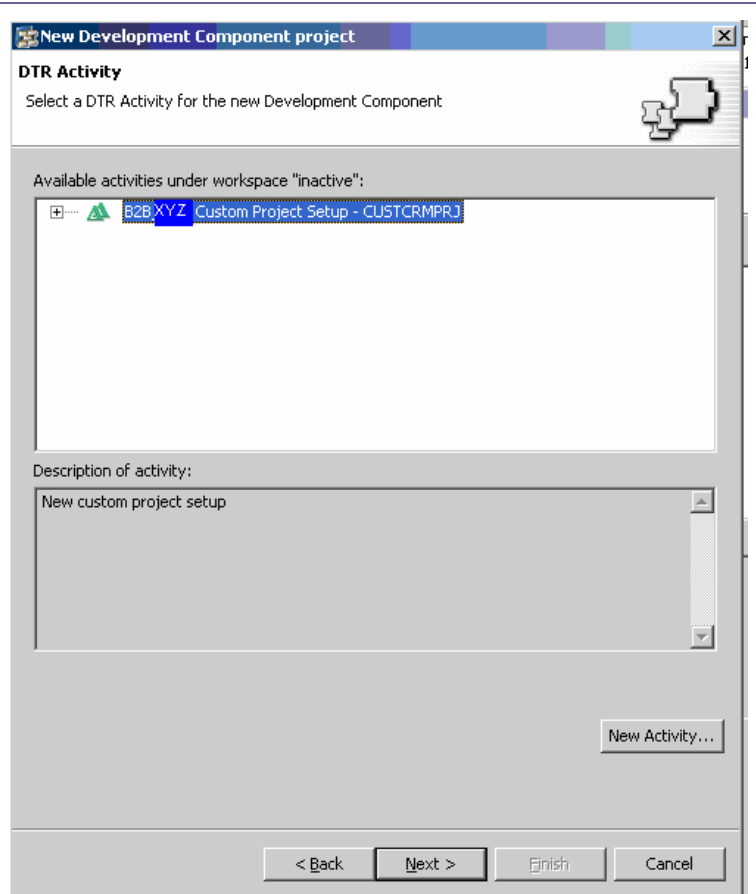
New Activity...

4. Enter details for
Display name:
Description:
- Choose OK
-  Activity name is synonymous to Transport name in ABAP terminology. Come-up with a meaningful convention for activity names.
- A single activity can hold changes for one or more of the development components (DC) of a given SC. But one activity can not have changes for more than one SC. Each SC must have a different activity or activities.



The 'New Activity' dialog box is shown. It has a title bar with a close button. Inside, there are two text input fields. The first is labeled 'Display name:' and contains the text 'B2B_XYZ Custom Project Setup - CUSTCRMPRJ'. The second is labeled 'Description:' and contains the text 'New custom project setup'. At the bottom right, there are two buttons: 'OK' and 'Cancel'.

5. Activity is created and showed under Available activities.
- Choose the activity.
 - Choose Next.



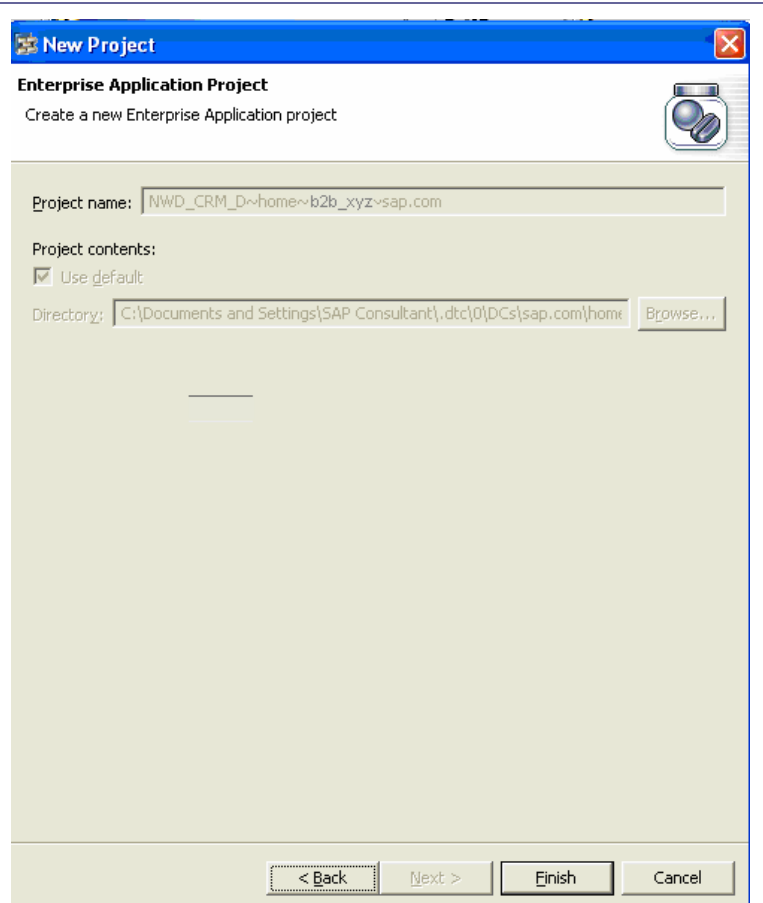
The 'New Development Component project' dialog box is shown. It has a title bar with a close button. Below the title bar, it says 'DTR Activity' and 'Select a DTR Activity for the new Development Component'. There is a list box titled 'Available activities under workspace "inactive":' which contains one item: 'B2B_XYZ Custom Project Setup - CUSTCRMPRJ'. Below the list box, there is a text area labeled 'Description of activity:' containing the text 'New custom project setup'. At the bottom right, there is a button labeled 'New Activity...'. At the very bottom, there are four buttons: '< Back', 'Next >', 'Finish', and 'Cancel'.

6. Along with a new DC, a new java project is also created.

- Choose Finish to complete process of creating DC and DC java project.

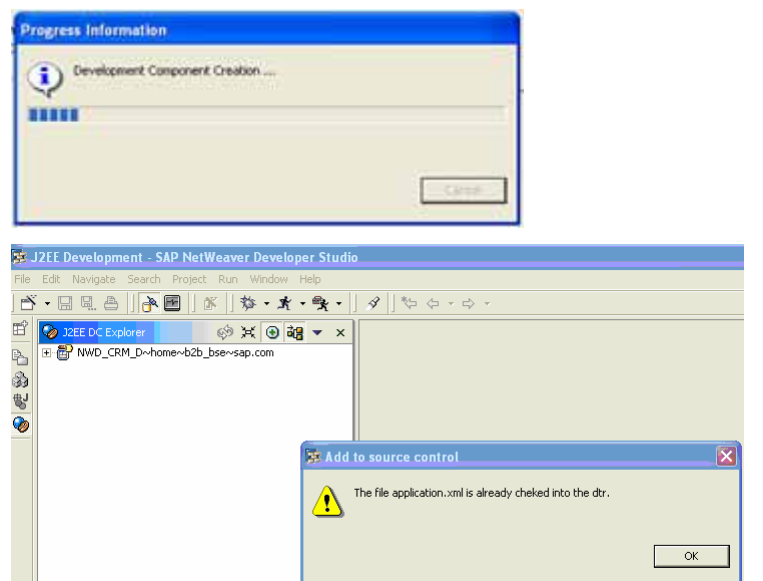


In order to make changes to the contents of any DC, a java project needs to be created for that DC. You make changes using this java project. For example, edit a JSP file or add a new java file.








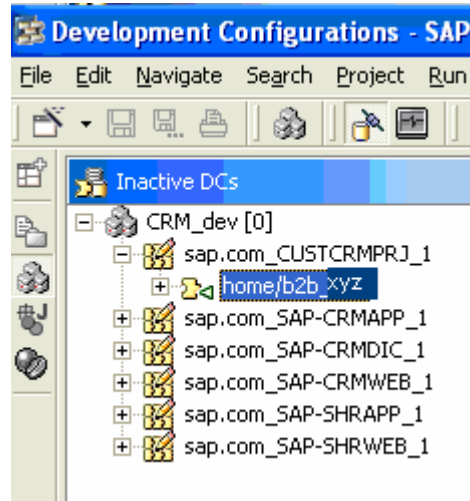
7. Process completes.

- New java project is shown.



8. Switch back to Dev. Configuration perspective.

- Choose  (development configuration view) from left pane. (Not the import wizard from top tool bar, both icons look same).
- Right click on CUSTCRMPRJ SC and Choose refresh.
- Expand the tree [+] to see the new DC.
-  If it does not show up, you may need to exit out of Dev. Studio and re-launch studio.
-  Do not choose  import wizard. Choose login , when ever you re-launch studio (NWDS). We are done with using the wizard (importing development configuration).

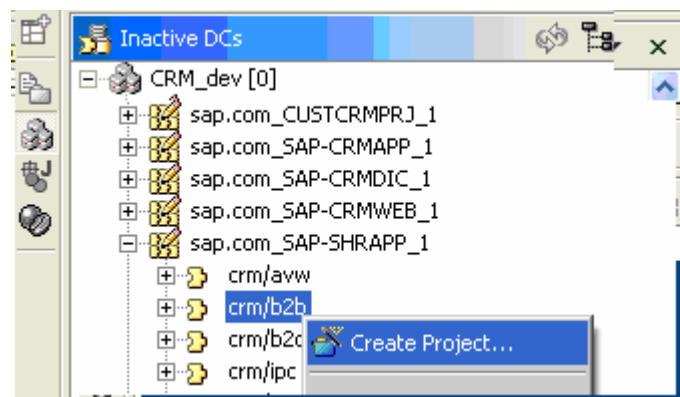


3.3.3 Copy initial set of files from standard application to custom application.

We need to copy files from the standard application crm~b2b to our custom application home/b2b_xyz. In order to do this, we need to create a project for crm~b2b DC of SHRAPP SC.

1. Expand SHRAPP_1

- Choose Sap.com_SAP-SHRAPP_1 → crm/b2b → Right Click → Choose Create Project

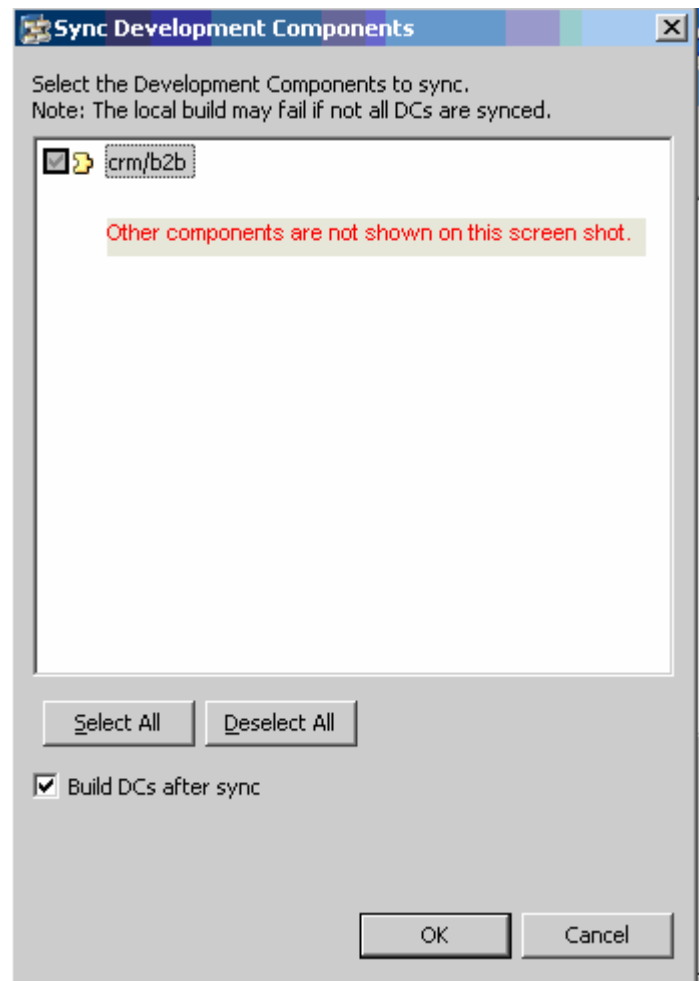


2. Sync Development Components screens is shown.

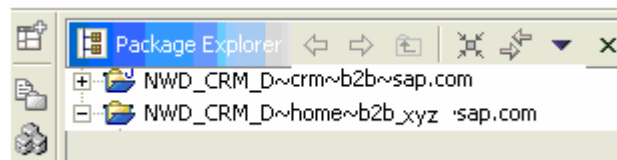


This screen should show several components with check box checked.

- Choose Select All.
- Choose OK.

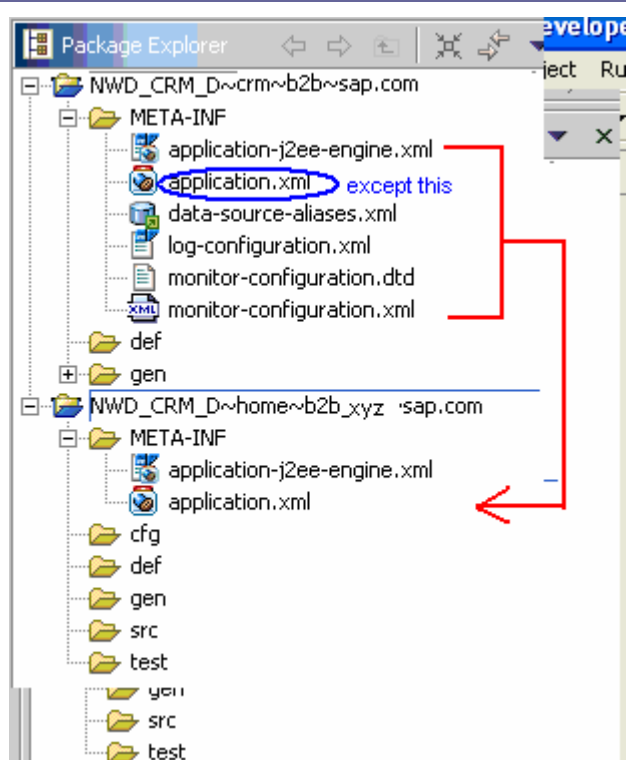


3. Java project for standard application crm~b2b is created.

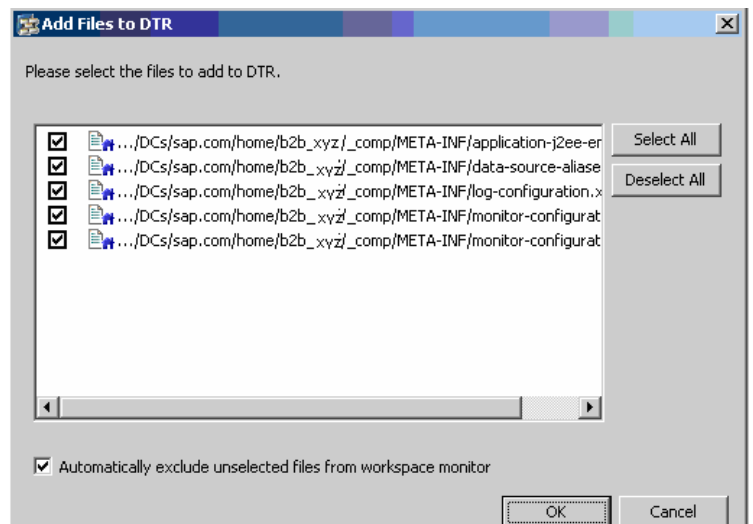


4. Copy all files from standard application to custom application.

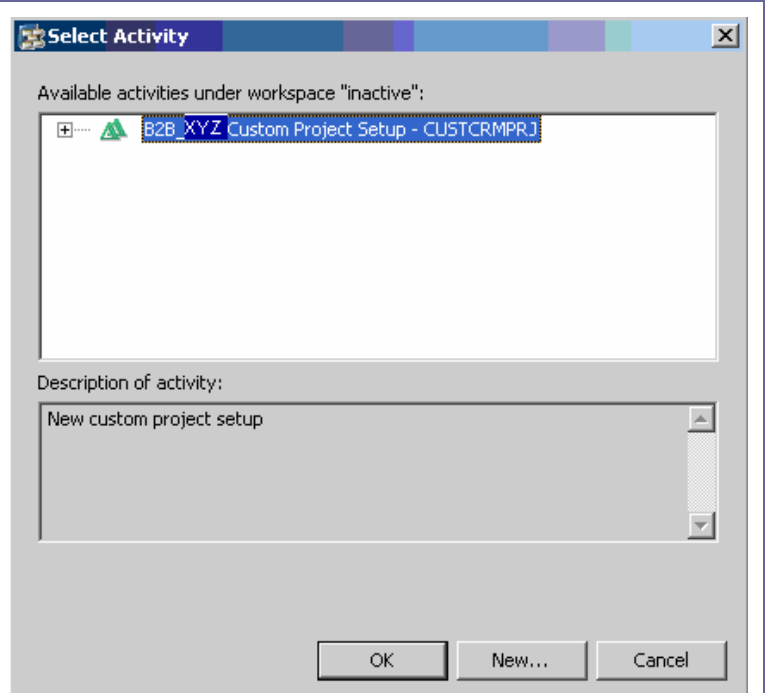
- *Expand* [+] home_b2b_xyz~sap.com
- *Expand* META-INF
- *Delete* application-j2ee-engine.xml
- *Deleting this file ensures this is added to the activity, when copied from standard, per the steps below.*
- *Expand* [+] crm~b2b~sap.com.
- *Expand* META-INF
- *Choose* all files except application.xml
 - (Shift + Click)
- *Right Click* → Copy
- *Paste* on to the project home~b2b_xyz~sap.com



5. Add all files to the activity.



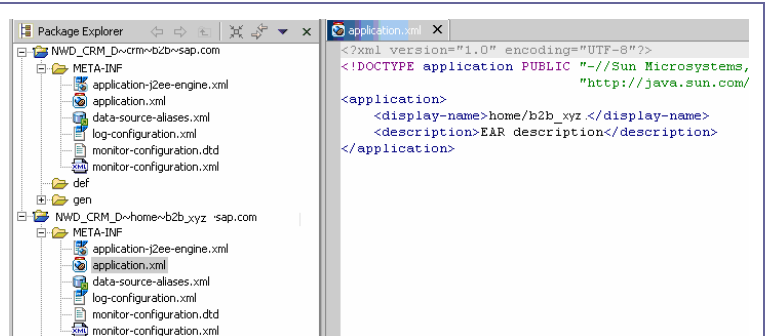
6. Choose the activity created before (in step 3.3.2.5).



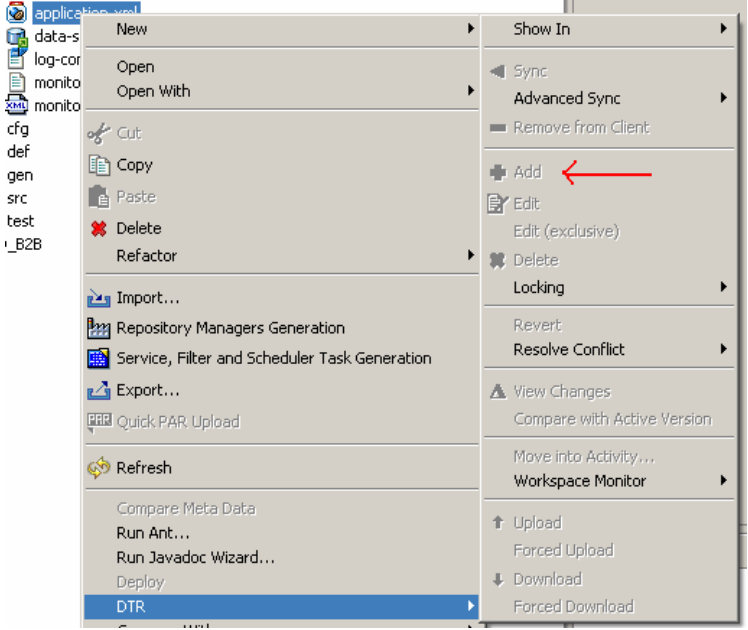


3.3.4 Adjust Context Root for New Application.

1. Modify application.xml.

- Expand [+]
- home_b2b_xyz~sap.com
- Expand META-INF
- Double click on application.xml
- Choose source tab



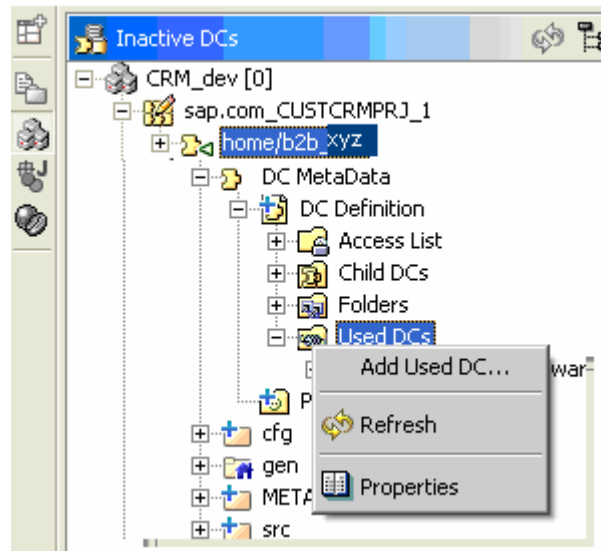
<p>2. <i>Modify application.xml to look like</i> →</p> <ul style="list-style-type: none"> • <i>Choose Save.</i>  <p>display-name: name of the application as shown in Visual Admin, J2EE</p> <p>web-uri: location of war file containing all web related code (jsp, java etc.)</p> <p>context-root: name of root folder on the server where application will be deployed. This is also the URL to access the custom application.</p> <p>Example: http://xyzdev.xyz.com:50100/b2b_xyz/b2b/init.do</p>	<pre><?xml version="1.0" encoding="UTF-8"?> <!DOCTYPE application PUBLIC "-//Sun Microsystems, Inc.//DTD J2EE Application 1.3/EN" "http://java.sun.com/dtd/application_1_3.dtd"> Original content <application> <display-name>home/b2b_xyz</display-name> <description>EAR description</description> </application> Change the content as below <application> <display-name>home/b2b_xyz</display-name> <description>XYZ B2B Application</description> <module> <web> <web-uri>sap.com~crm~isa~web~b2b.war</web-uri> <context-root>b2b_xyz</context-root> </web> </module> </application></pre>
<p>3. Add this file to activity, if not already added.</p> <ul style="list-style-type: none"> • <i>Right click</i> on application.xml • <i>Choose DTR</i>→Add  <p>If Add option is disabled, it means the file is already added to the activity, at the time creation of this custom project.</p>	

3.3.5 Add a used relationship between the New DC and the Web DC

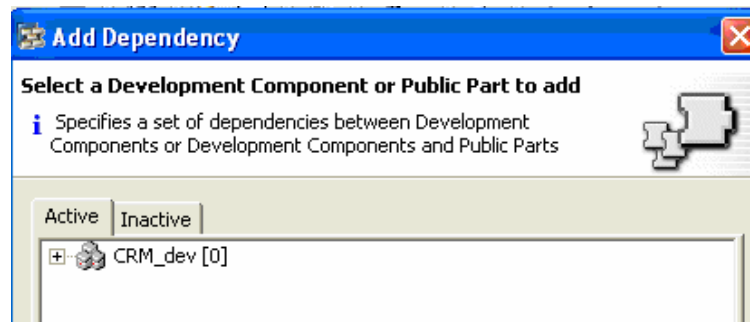
(crm/isa/web/b2b → home/b2b_xyz. The new DC uses the web DC).

1. From development configuration view.

- Expand tree [+] home/b2b_xyz DC.
- Choose DC MetaData → Used DCs.
- Right Click and Choose Add Used DC.

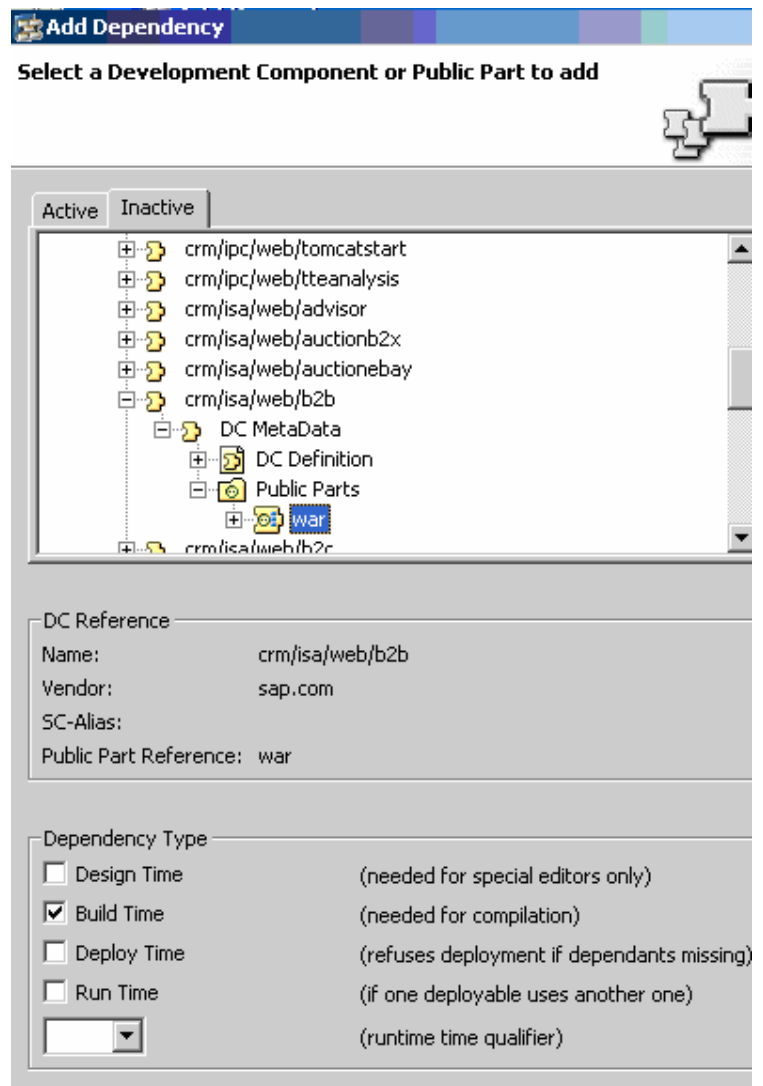


2. Expand CRM_dev[0]



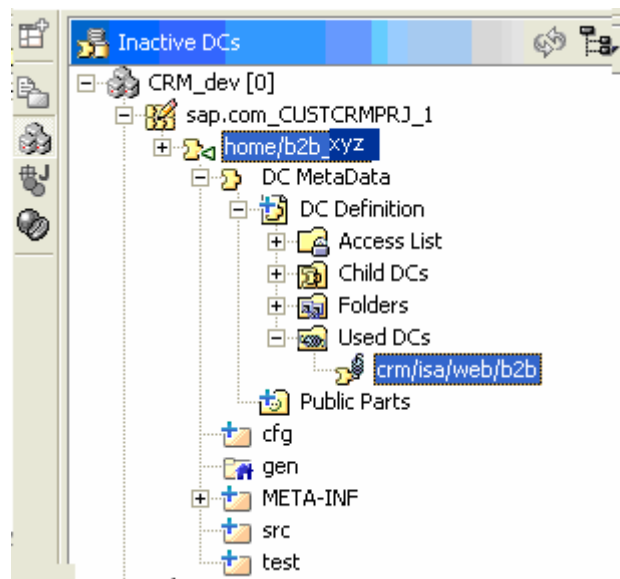
3. Add dependency to public part

- Choose sap.com_SAP-SHRWEB_1→crm/isa/web/b2b→DC Metadata→Public Parts→war
- Choose Finish



4. Verify the creation of used DC relationship.

- Expand Used DCs and make sure the newly added used relationship shows up.

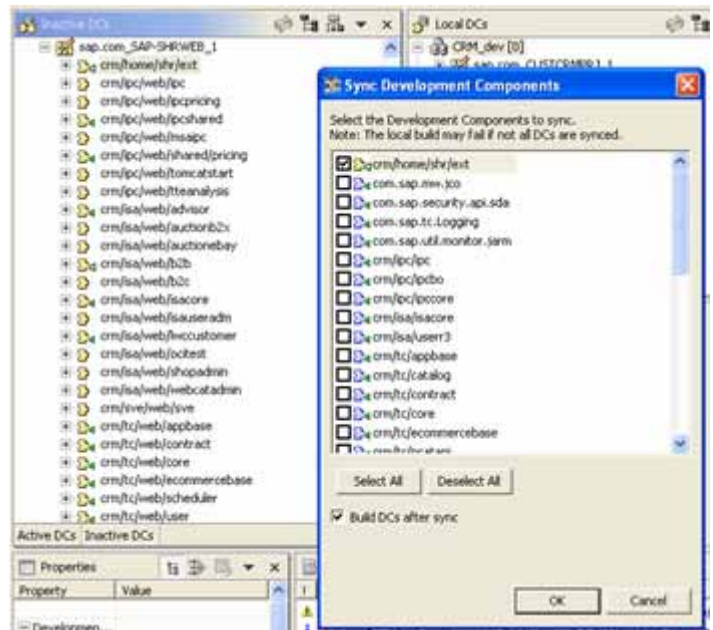


3.3.6 Create project for Custom Java files. This project holds all custom java code.

1. Switch to development configuration view.

Create new project for the DC shr/ext of SC SHRWEB.

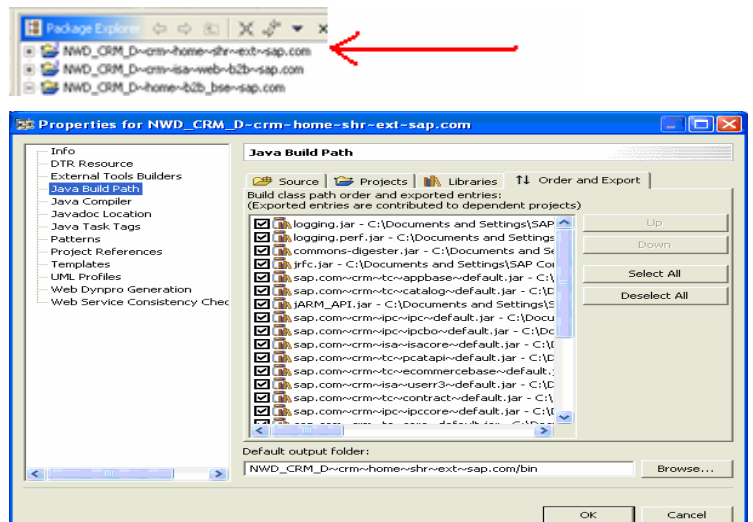
- *Expand [+] SAP-SHRWEB* → *crm/home/shr/ext*.
- *Right click and Choose Create Project.*
- *Accept defaults for Sync Development Components.*
- *Choose OK.*



2. Verify new project in java perspective.



- If the project is not built successfully,
 - Go to java perspective.
 - Right click on this new project.
 - Select properties.
 - Select build path.
 - Select all and click OK.
 - This should fix the issue.



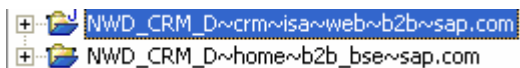
3.3.7 Create project for Web Module files (JSP, XML, Mimes, Resource files etc.).

JSPs are modified directly in the standard source code.

1. Switch to development configuration view.

Create new project for the DC
crm/isa/web/b2b of SC SHRWEB.

- *Expand [+] SAP-SHRWEB→*
crm/isa/web/b2b
- *Right click and Choose Create Project.*
- *Accept defaults for Sync Development Components.*
- *Choose OK.*
 - A new project is created for web~b2b~sap.com.

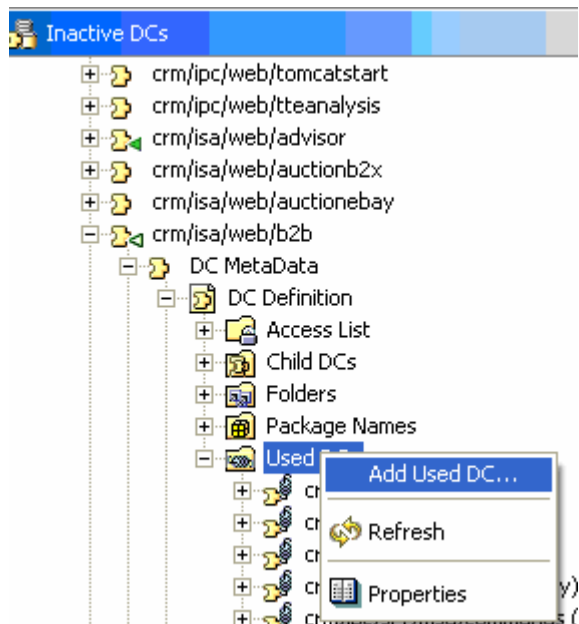


3.3.8 Add used relationship between Web/b2b and Shr/ext DCs.

web/b2b uses the DC shr/ext.

1. Switch to development configuration view.

- *Choose SHRWEB→*
/crm/isa/web/b2b SAP
- *Right Click and Choose Add new used DC relationship.*

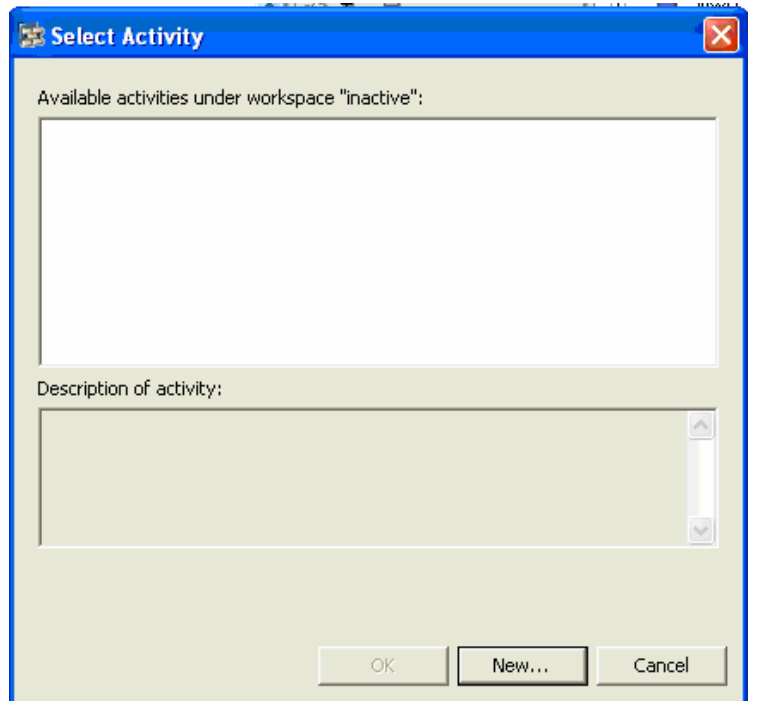


2. Create a new activity.

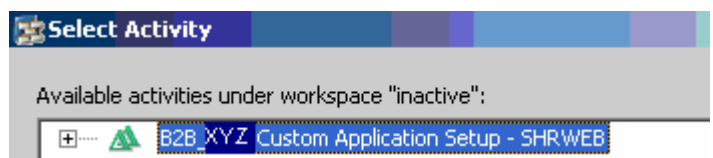


Each SC has its own activity. You created an activity for the SC, CUSTCRMPRJ previously. Now create an activity for the SC, SHRWEB.

- Choose New



3. Add activity details



4. Choose sap.com_SAP-SHRWEB_1→crm/home/shr/ext→DC
MetaData→Public Parts→assembly

- Choose Finish
- Verify the new Used DC relationship in crm/isa/web/b2b.

Add Dependency

Select a Development Component or Public Part to add

Specifies a set of dependencies between Development Components or Development Components and Public Parts

ActiveInactive

sap.com_SAP-SHRWEB_1

crm/home/shr/ext

DC MetaData

DC Definition

Child DCs

Public Parts

assembly

crm/ipc/web/ipc

crm/ipc/web/ipcpricing

crm/ipc/web/ipcshared

crm/isa/web/isaipc

DC Reference

Name:crm/home/shr/ext

Vendor:sap.com

SC-Alias:

Public Part Reference:assembly

Dependency Type

☐ Design Time

(needed for special editors only)

☒ Build Time

(needed for compilation)

☐ Deploy Time

(refuses deployment if dependants missing)

☐ Run Time

(if one deployable uses another one)

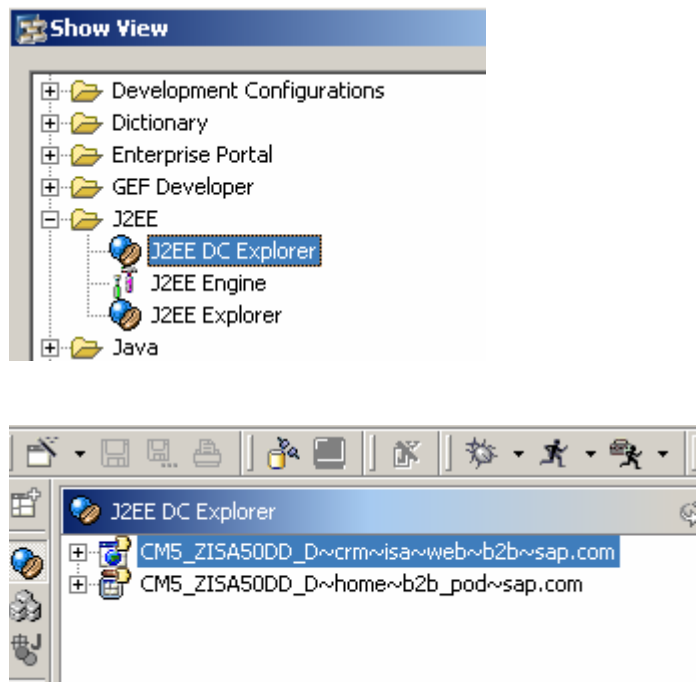
(runtime time qualifier)

- 26 -

3.3.9 Build and Deploy Custom Application to Local Machine.

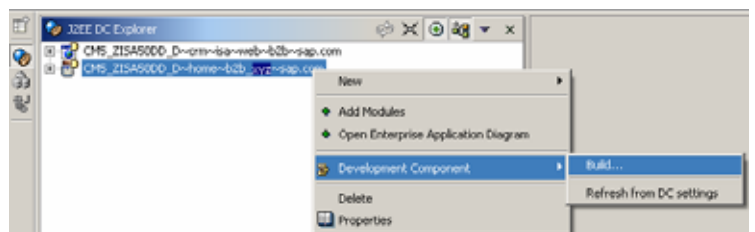
1. Switch to J2EE DC Explorer view

- Choose
Windows→Showview→Other→J2EE
E→J2EE DC Explorer



2. *Right Click* home~b2b_xyz

- Choose Development
Component→Build



3. Accept defaults for Build Development Components.




4. Deploy
- *Right Click* home~b2b_xyz
 - Choose Development Component→Deploy


Application is deployed to local J2EE in couple of minutes.

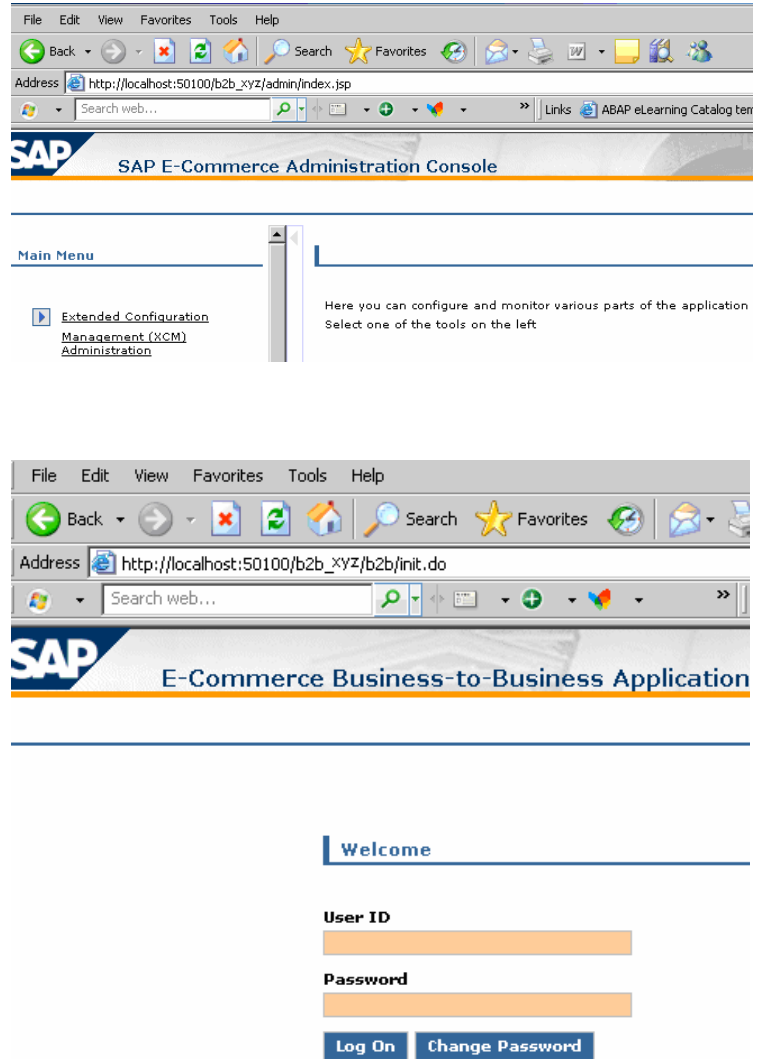
5. Test Custom Application

- Access URL for xcmadmin..
- Example:
http://localhost:50100/b2b_xyz/admin/index.jsp

- Access URL for application
- Example:
http://localhost:50100/b2b_xyz/b2b/init.do

 XCM configuration must have been completed for standard b2b. By default custom b2b copies the standard b2b settings from the database.

 You may need to stop/start the custom application.

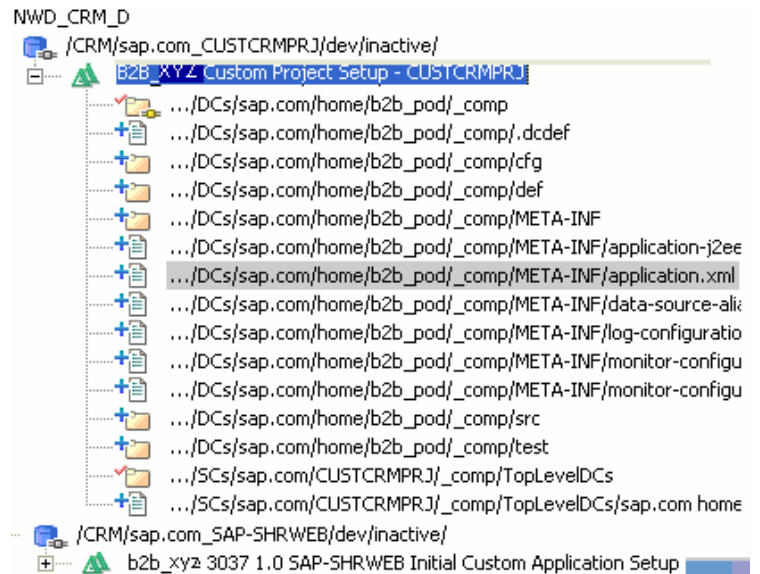


The image shows two screenshots of a web browser. The top screenshot displays the 'SAP E-Commerce Administration Console' interface. The browser's address bar shows 'http://localhost:50100/b2b_xyz/admin/index.jsp'. The page has a 'Main Menu' on the left with a link to 'Extended Configuration Management (XCM) Administration'. The main content area contains the text: 'Here you can configure and monitor various parts of the application. Select one of the tools on the left.' The bottom screenshot shows the 'SAP E-Commerce Business-to-Business Application' login page. The browser's address bar shows 'http://localhost:50100/b2b_xyz/b2b/init.do'. The page has a 'Welcome' header, followed by 'User ID' and 'Password' labels, each with an orange input field. At the bottom, there are two buttons: 'Log On' and 'Change Password'.

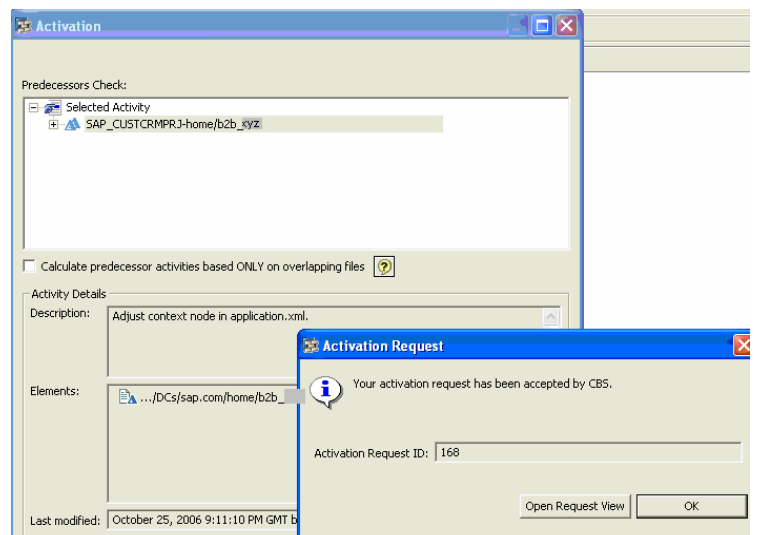
3.3.10 Activate and Auto-Deploy to Development Server.


1. Check-in all changes

- Right click on , Choose Check-in.





2. Activate



3. Once activities are activated, the icon turns to .



<p>4. Test application on Development Server.</p> <ul style="list-style-type: none"> Once all activities are activated, if auto-deploy is on (default for Track), the application is deployed to Development Server. Access URL for XCM admin. Example: http://xyzdev.xyz.com:50100/b2b_xyz/admin Access URL for custom application Example: http://xyzdev.xyz.com:50100/b2b_xyz/b2b/init.do <p> XCM configuration must have been completed for standard b2b. By default custom b2b copies the standard b2b settings from the database.</p> <p> You may need to stop/start the custom application.</p>	
---	--

3.4 Modify Custom Application

<p>1. Make a change to a JSP.</p> <ul style="list-style-type: none"> <i>Launch</i> Developer Studio. <i>Login</i> to NWDI server <i>Switch</i> to Java Perspective <i>Expand</i> crm~isa~web~b2b project <i>Access</i> webContent→b2b→welcome.jsp <i>Right click</i> on welcome.jsp→DTR→Edit. <i>Create</i> a new activity. <i>Add</i> welcome.jsp to the new activity (select activity) <i>Make</i> some html changes. Example: add customer name <i>Build and deploy</i> to local J2EE engine. <i>Test</i> the application and verify changes on welcome page. 	
--	--

3.5 Deploy to Development Server

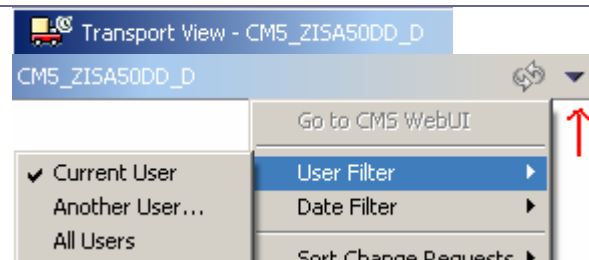
1. Move change to NWDI.
 - *Check-in* activity.
 - *Activate* activity.
 - *Test* changes on development server.
 - *Test* the application and verify changes on welcome page.

3.6 Complete Developer Tasks

1. Once application is tested okay on development server, proceed with moving changes to consolidation system.
 - *Launch* Dev. Studio.
 - *Choose* activation view.
 - *Choose* Transport view.
 - *Right click* and release all activities that are ready for consolidation.



By default each user can see only their activities in the transport view. This behavior can be changed by resetting the user filter to 'All Users'.



4 Appendix

4.1 Common Issues During Project Setup and Usage.

Issue	Description	Resolution	Comments
Standard application is still being overwritten.	After setting up the custom application as per Development & Extension guide, once deployed, the custom app. Is overwriting the standard application.	There seems to be an issue with CMS in NW2004s sp10 and below.	The fix is supposed be available in sp 13.
Can not login to SLD/NWDI from NWDS	When trying to setup NWDS project setup, could not login to DTR. System kept rejecting UserID/Password, when only NDI_DEVELOPER ROLE is granted to the user accounts.	Temporarily j2ee admin privileges were granted	Later we found that basis needs to do ACL configuration in order to use JDI_DEVELOPER role. After an administrator configuring these using the NWDS, the userid works fine with JDI_DEVELOPER role.
One of the SCs in the track doesn't show any DCs.	Even though we imported all required SCs into the track, the SC, SAP~SHRWEB does not show any DCs under it.	Re-imported the latest version of this SC from service market place.	
Build process for custom app fails.	After creating custom project per extension guide, check-in and activation, the build fails.	Add correct entries in application.xml. Context root and web-uri entries need to be specified properly. The extension guide was not clear on this.	New entries should look like. <pre> <application> <display-name>home/b2b_xyz</display-name> <module> <web> <web-uri>sap.com~crm~isa~web~b2b.war</web-uri> <context-root>b2b_xyz</context-root> </web> </module> </application> </pre>
Custom b2b app shows XCM error.	After deploying new application, the app. Shows error message "Failed to initialize XCM". Even the b2b_xyz/admin screen just shows a blank screen with out any links or menu items to XCM configuration/administration.	Applied patch SP09-03 for all JAVA and CRM components. One of the xml files, application-j2ee-engine.xml file went missing from custom app, after deployment. Re-added this file and re-deployed.	application-j2ee-engine file is lost during first deployment. This file needed to be copied again from standard b2b to custom b2b and redeploy again.

Issue	Description	Resolution	Comments
Java Debug won't work.	After configuring java debug as per help.sap.com, the debug port does not stay up when debug process is started. The port kept dying as soon as debug is initiated.	Changed the port to 1024 from 54021.	After trying several different ways (single node, multiple server nodes) etc., finally using the standard port "1024" solved the issue. This could be related to operating system/sizing issue with AS/400.
Application-j2ee-engine.xml is not added to activity.	When application-j2ee-engine.xml is copied from standard b2b to custom b2b, the NWDS does not recognize this as a change and there by does not add to the activity.	Delete the application-j2ee-engine.xml from custom application before copying from standard app.	This ensures the file is added to the activity.

4.2 NWDI Notes and Blogs

Nr	Type	Title/Nr	Description	URL
2874	Blog	Best practice	Principles of NWDI track design	https://www.sdn.sap.com/irj/sdn/weblogs?blog=/pub/wlg/2874
3390	Blog	Special track design	Extended track design for short release cycles and maintenance	https://www.sdn.sap.com/irj/sdn/weblogs?blog=/pub/wlg/3390
737368	Note	Hardware requirements of NWDI	Sizing of NWDI in multiple scenarios	https://service.sap.com/sap/support/notes/737368
754143	Note	CMS remarks / restrictions	Do's and Don'ts when using the CMS	https://service.sap.com/sap/support/notes/754143
896427	Note	NWDI Admin User/Password update	Server communication problems after the reconfiguration of the NWDI admin user/password	https://service.sap.com/sap/support/notes/896427
907211	Note	CBS Build problems	CBS build problem on Unix platforms	https://service.sap.com/sap/support/notes/907211
923352	Note	Debugging of Java applications - Settings	Which settings have to be performed to setup a debuggable Java application server	https://service.sap.com/sap/support/notes/923352
935334	Note	External libs are not packed into J2EE lib	Bug with the usage of external libraries in 6.40 SP16	https://service.sap.com/sap/support/notes/935334
935475	Note	Grouping SLD instances	How to group several SLD instances	https://service.sap.com/sap/support/notes/935475
936318	Note	Separating SLD instances	How to separate SLD instances (only German)	https://service.sap.com/sap/support/notes/936318
947581	Note	Changing the workspace directories of NWDS	Changing the default settings for all NWDI relevant directories of the NWDS due to use multiple configurations, versions or for a Citrix installation	https://service.sap.com/sap/support/notes/947581
955281	Note	CMS import fails due to an internal server error in DTR	CMS import fails with an INTERNAL SERVER ERROR in the DTR server	https://service.sap.com/sap/support/notes/955281
985821	Note	DTR Import Hangs on MSSQL Database	DTR import is not proceeding on a MS SQL database	https://service.sap.com/sap/support/notes/985821